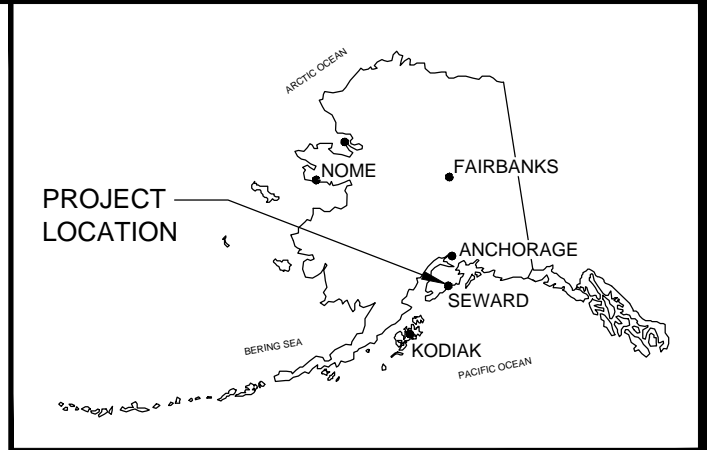
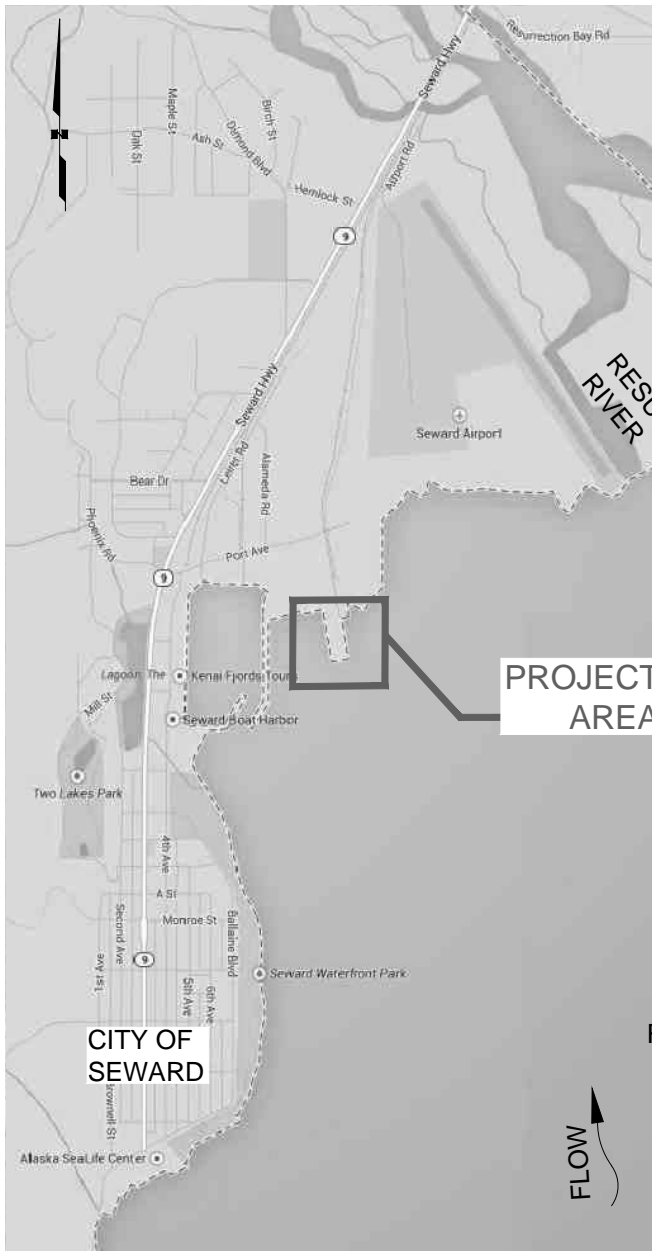


Z:\project\1995.01 ARRC Seward Marine Terminal Expansion\Civil\ACAD\10 Permit Assist\1995.01.09 - USACE Permit 1.DWG

Plotted 8/20/2014 2:24 PM by Luke Ayres



POA - 1965 -34 - M20

**ALASKA RAILROAD CORPORATION**

ARRC SEWARD MARINE TERMINAL FREIGHT  
DOCK EXPANSION - SEWARD, ALASKA

PROPOSED ACTIVITY: FILL AND PILE DOCK  
EXTENSION WITH MINOR DREDGING

WATERBODY: RESURRECTION BAY

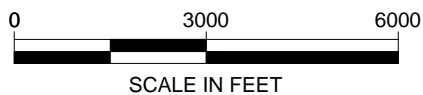
T1S, R1W, SEC 3, T1S, R1W  
SEWARD MERIDIAN  
USGS QUADRANGLE SEWARD A-7 SE

**LOCATION AND  
VICINITY MAP**

JUNE 2014

FIGURE 1 OF 6

ADJOINING PROPERTY OWNERS:  
STATE OF ALASKA  
CITY OF SEWARD





POA - 1965 -34 - M20

# 1 **CONCEPT PLAN** Scale: NTS

## ALASKA RAILROAD CORPORATION

ARRC SEWARD MARINE TERMINAL FREIGHT DOCK EXPANSION - SEWARD, ALASKA

PROPOSED ACTIVITY: FILL AND PILE DOCK EXTENSION WITH MINOR DREDGING

WATERBODY: RESURRECTION BAY

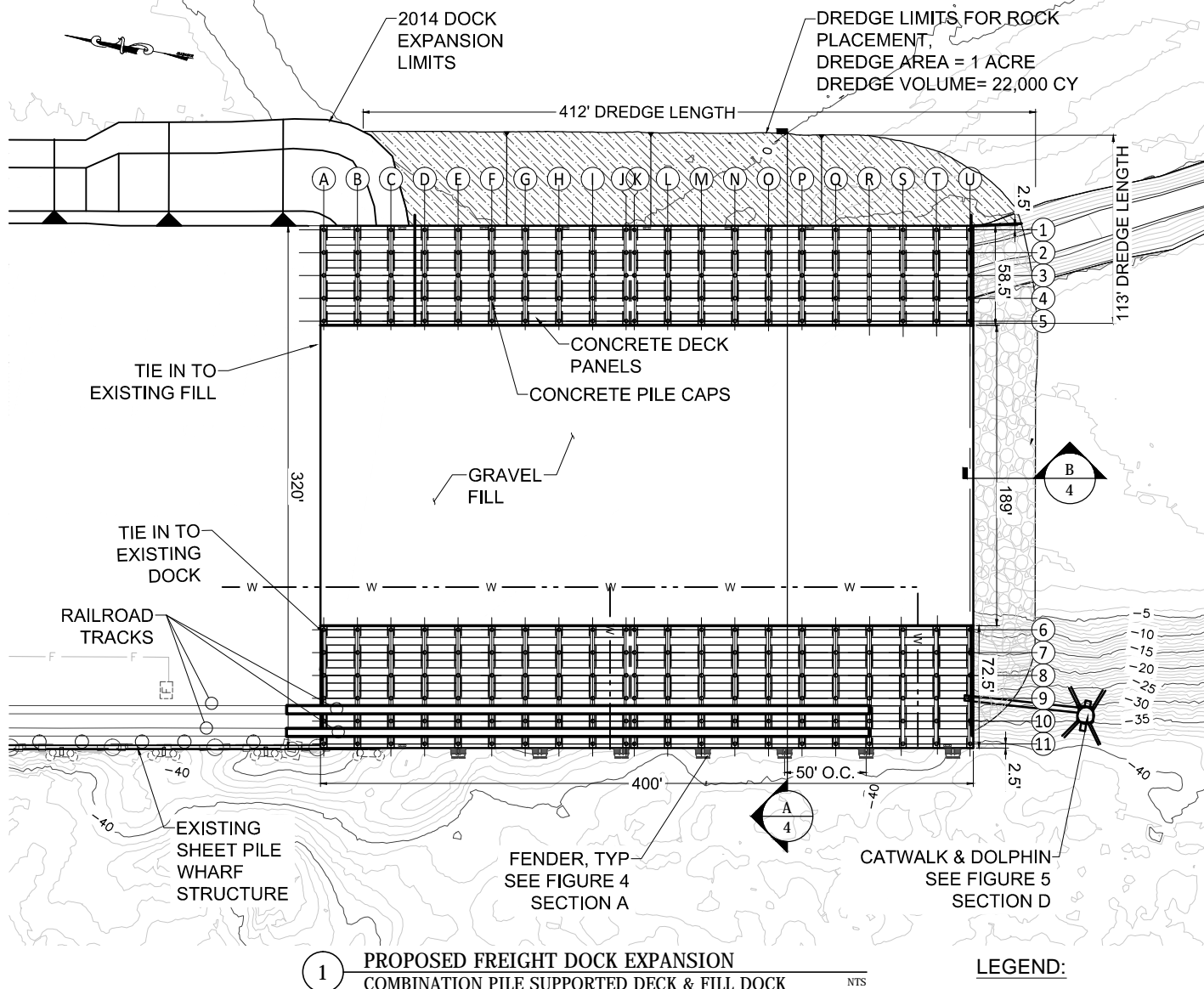
T1S, R1W, SEC 3, T1S, R1W  
SEWARD MERIDIAN  
USGS QUADRANGLE SEWARD A-7 SE

## SITE PLAN

JUNE 2014

FIGURE 2 OF 6

ADJOINING PROPERTY OWNERS:  
STATE OF ALASKA  
CITY OF SEWARD



# NOTES:

PILES:	24" DIA x 0.5" ASTM A252 GRADE 3 WITH CAST STEEL DRIVING SHOE.
DECK PANELS:	PRESTRESSED CONCRETE HAUNCH PANELS WITH 18" MIDSPAN THICKNESS AND 27" END THICKNESS.
DECK EDGE MEMBERS:	PRECAST CONCRETE 2'-6" WIDE x 2'-3" DEEP (AT EDGE OF DOCK WITHOUT PILE CAP).
PILE CAP:	CIP, 4'-0" WIDE x 2'-6" DEEP.

## ALASKA RAILROAD CORPORATION

ARRC SEWARD MARINE TERMINAL FREIGHT DOCK EXPANSION - SEWARD, ALASKA

PROPOSED ACTIVITY: FILL AND PILE DOCK EXTENSION WITH MINOR DREDGING

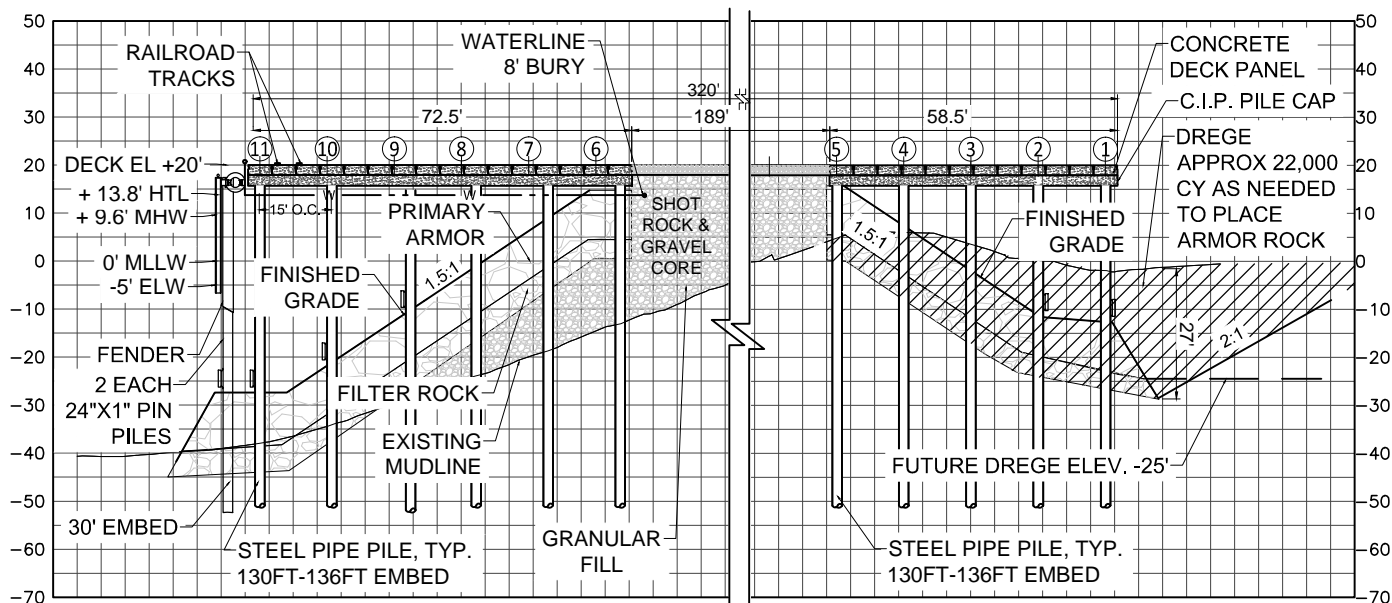
WATERBODY: RESURRECTION BAY

T1S, R1W, SEC 3, T1S, R1W  
SEWARD MERIDIAN  
USGS QUADRANGLE SEWARD A-7 SE

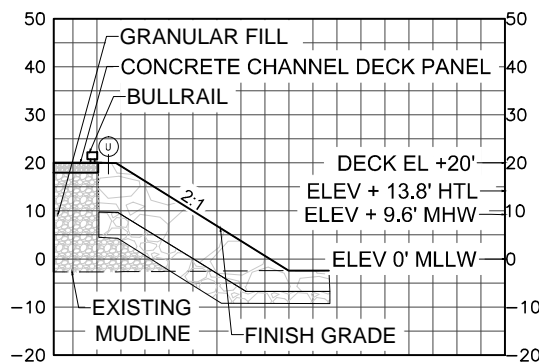
PROPOSED FREIGHT DOCK EXPANSION

JUNE 2014

FIGURE 3 OF 6



**A** ALT # 4 SECTION  
NTS



**B** ALT # 4 SECTION  
NTS

POA - 1965 -34 - M20

**ALASKA RAILROAD CORPORATION**

ARRC SEWARD MARINE TERMINAL FREIGHT DOCK EXPANSION - SEWARD, ALASKA

PROPOSED ACTIVITY: FILL AND PILE DOCK EXTENSION WITH MINOR DREDGING

WATERBODY: RESURRECTION BAY

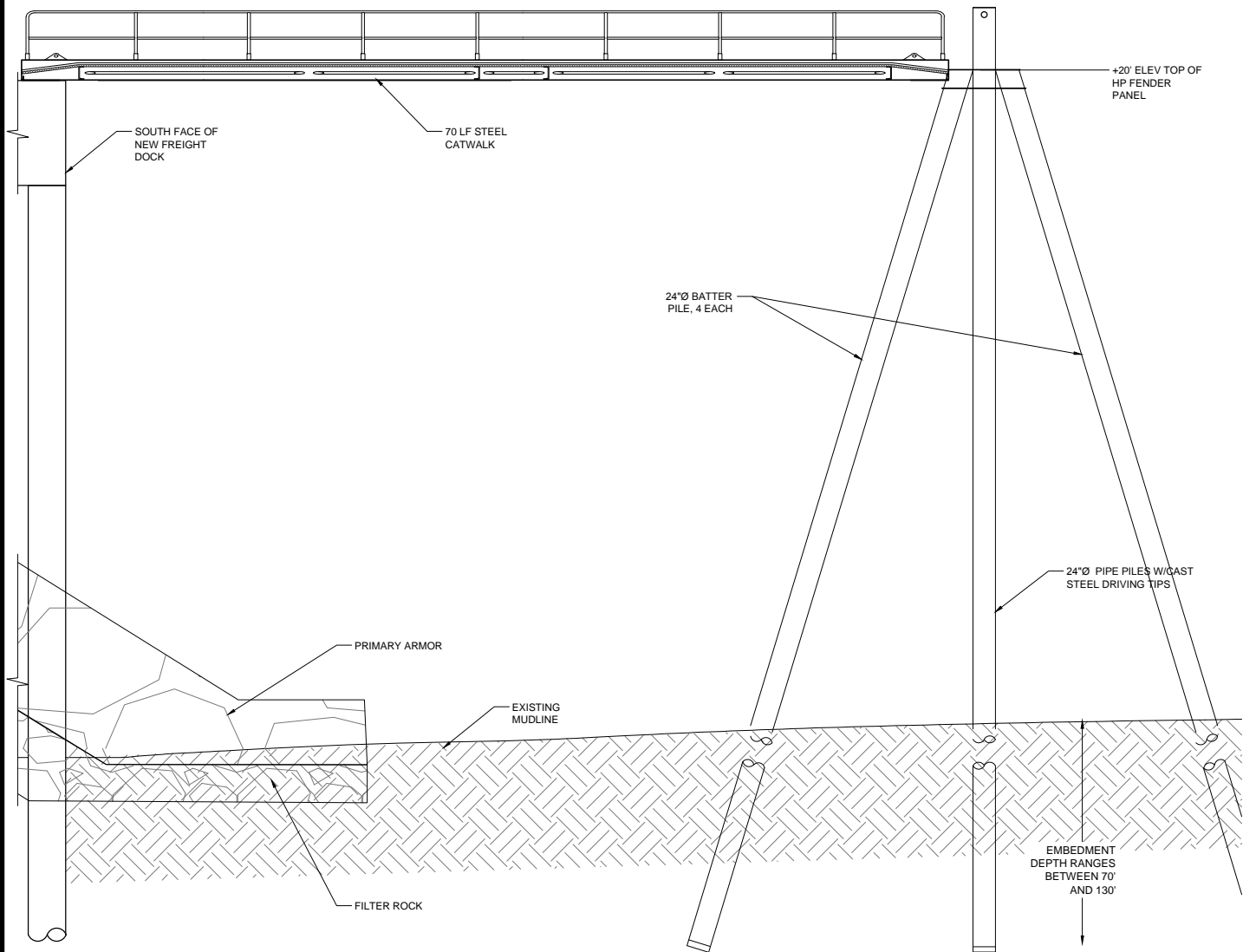
T1S, R1W, SEC 3, T1S, R1W  
SEWARD MERIDIAN  
USGS QUADRANGLE SEWARD A-7 SE

PROPOSED FREIGHT DOCK EXPANSION SECTIONS  
JUNE 2014

FIGURE 4 OF 6

Z:\project\1995.01 ARRC Seward Marine Terminal Expansion\Civil\ACAD\10 Permit Assist\1995.01.09 - USACE Permit 5-6.dwg

Plotted 8/21/2014 8:40 AM by Luke Ayres



**D CATWALK TYPICAL SECTION**  
NTS

POA - 1965 -34 - M20

ALASKA RAILROAD CORPORATION

ARRC SEWARD MARINE TERMINAL FREIGHT DOCK EXPANSION - SEWARD, ALASKA

PROPOSED ACTIVITY: FILL AND PILE DOCK EXTENSION WITH MINOR DREDGING

WATERBODY: RESURRECTION BAY

T1S, R1W, SEC 3, T1S, R1W  
SEWARD MERIDIAN  
USGS QUADRANGLE SEWARD A-7 SE

TYPICAL FENDER SECTION

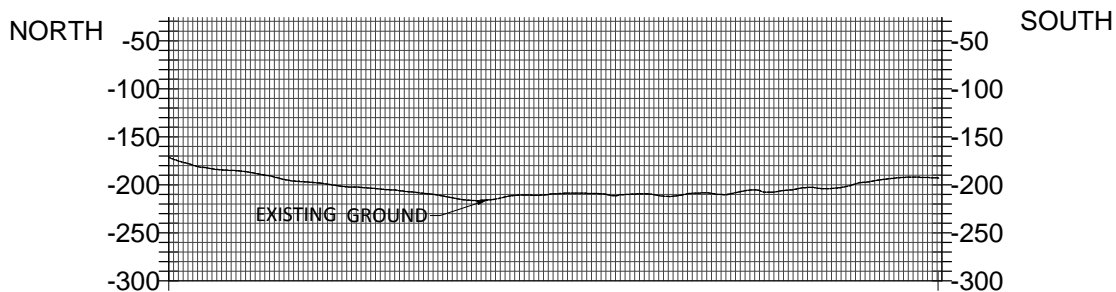
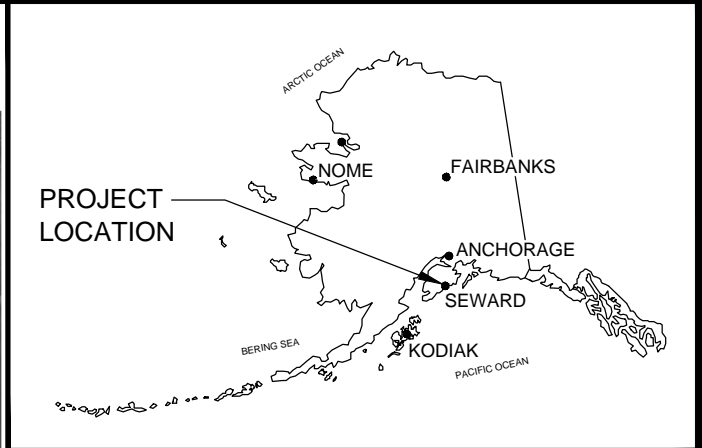
JUNE 2014

FIGURE 5 OF 6

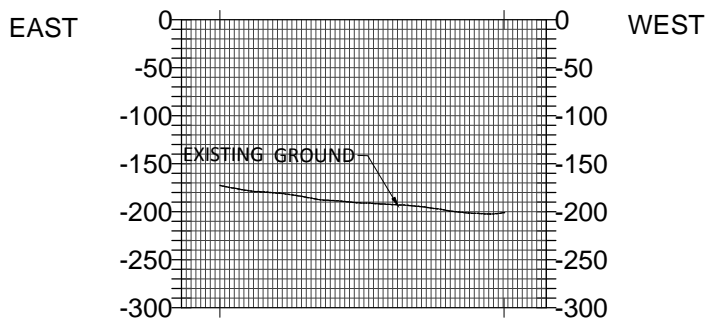
**NOTE:**

1. EMBEDMENT DEPTH WILL BE DETERMINED DURING CONSTRUCTION BASED ON THE ULTIMATE TOTAL CAPACITIES THAT ARE ACHIEVED DURING PILE DRIVING/TESTING.

Z:\project\1995.01 ARRC Seward Marine Terminal Expansion\Civil\ACAD\10 Permit Asset\1995.01.09 - USACE Permit 7.dwg  
Plotted: 12/12/2014 9:34 AM by Luke Ayer



**(B) DISPOSAL AREA SECTION**  
Scale: 1H:5V



**(A) DISPOSAL AREA SECTION**  
Scale: 1H:5V

POA - 1965 -34 - M20

**ALASKA RAILROAD CORPORATION**

ARRC SEWARD MARINE TERMINAL FREIGHT  
DOCK EXPANSION - SEWARD, ALASKA

PROPOSED ACTIVITY: FILL AND PILE DOCK  
EXTENSION WITH MINOR DREDGING

WATERBODY: RESURRECTION BAY

T1S, R1W, SEC 3, T1S, R1W  
SEWARD MERIDIAN  
USGS QUADRANGLE SEWARD A-7 SE

**DISPOSAL SITE  
VICINITY MAP**

JUNE 2014

FIGURE 6 OF 6

SOURCE: USGS LIDAR TOPO AND MULTIBEAM BATHYMETRY, PUBLICATION DATE 2008